

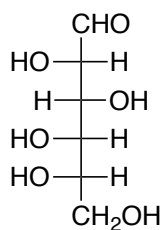
Quiz 4b

Name:

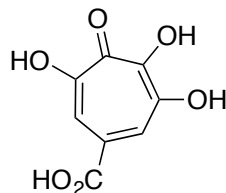
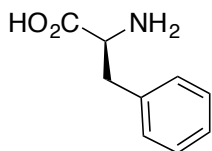
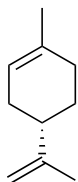
Recitation Instructor

You have 30 minutes for the following quiz. It starts 5 minutes into your recitation period.

1. Draw the following sugar in a 3D chair conformation (6-membered ring), making sure to show the appropriate enantiomer. (8 points)



2. Which of the following molecules would you think is most likely a terpene and why?. (6 points)



2. What are the product(s) of the following reaction. (4 points)

